



STATUTORY CONSULTATION DOCUMENT



Ysgol y Faenol

18 September – 30 October 2018

Contents

Section	Description	Page Number
	Foreword	2
1	Introduction	3
1.1	The proposal relating to this statutory consultation	3
1.2	The vision for the catchment area	3
2	The Consultation	4
3	Background Details	7
3.1	How the proposal was developed	7
3.2	Bangor Catchment Review Panel (CRP)	8
3.3	Capital Investment	9
3.4	Evaluating Different Options	9
3.5	Long list of Possible Options	10
4	Existing Arrangements in Bangor	12
5	Case for change	13
5.1	Background	13
5.2	Pupil Population and Projections	14
6	The Proposal	16
6.1	Quality of education	16
6.2	Summary of the effect of the current proposal on improving educational standards	18
6.3	School Capacity	18
6.4	Management and Leadership	19
6.5	Condition and Suitability of Buildings	20
6.6	Details of the Proposal	21
6.7	Proposed Transport Arrangements	25
6.8	Surplus Places	25
6.9	Financial Resources	25
6.10	The Welsh Language	26
6.11	The Community	26
6.12	Governance and Staffing Matters	26
6.13	Impact on Equality	26
6.14	Potential Advantages for Children and Young People	27
6.15	Proposed Admission Arrangements	27
6.16	Information regarding Additional Learning Needs	27
6.17	Future use of sites	27
6.18	Potential Risks	27
6.19	Legal Category relating to the proposal	28
6.20	Other Church in Wales Schools in Wales	29
6.21	Pre-Consultation discussions with the Church in Wales	29
7	Summary of the proposal	30
8	Explaining the Statutory Process	30
9	Proposed Outline Timetable	32

Appendix 1 – Options Appraisal

Foreword

The Governing Body of Ysgol y Faenol at a meeting held on **3 July, 2108** agreed to undertake a statutory consultation on a proposal to increase the capacity of Ysgol y Faenol, with the requirements of Section 48 of the School Standards and Organisation Act 2013.

The statutory consultation will be held between **18 September and 30 October, 2018** and is based on a proposal to **increase the capacity of Ysgol y Faenol from 186 to 315**.

The Governing Body of Ysgol y Faenol invites you to put forward your views for consideration before a decision is made. At the end of the consultation period, a report will be submitted to **the Governing Body of Ysgol y Faenol**.

A copy of this document, and other background papers, are available on the Council's website www.gwynedd.llyw.cymru/modernisingeducation and at your local school and library. If you require additional copies you are welcome to contact the Modernising Education Office by telephone – 01286 679247 or by e-mailing modernisingeducation@gwynedd.gov.uk.

PLEASE NOTE – any comments on the statutory consultation document should be sent to the attention of the Governing Body of Ysgol y Faenol through the Modernising Education Office by **13:00 Tuesday, 30 October 2018**. The relevant contact details are to be found at the end of the statutory consultation document.

We look forward to receiving your views.

Sincerely,

**Governing Body
Ysgol y Faenol**

1. Introduction

There are 11 schools within the Bangor catchment area, two secondary schools (Ysgol Uwchradd Tryfan and Friars) and 9 primary schools (Ysgol Y Garnedd, Hiracl, Y Faenol, Llandygai, Cae Top, Glancegin, Babanod Coedmawr, Glanadda and Ein Harglwyddes). The schools are situated within and around the City of Bangor. The catchment area for Ysgol y Garnedd and Ein Harglwyddes includes the whole of Bangor. A new school building was opened at Ysgol Cae Top in September 2009 following an Investment of £4million. It is apparent that Ysgol Llandygai admits children from two catchment-areas, namely Bangor and Bethesda.

Gwynedd Council has considered several options for primary education in Bangor in order to ensure a sustainable provision for the future, responding in particular to an increase in the demand for places in the Penrhosgarnedd area and improving the provision for learners in the City.

This document outlines the consultation process, the factors that the Governing Body considers relevant and the decision-making process.

Statutory procedures are usually necessary to make significant changes to schools. The procedures are designed to enable changes to be made where they are considered necessary, but in a way which protects the interests of learners and allows interested parties the opportunity to have their say in the process.

In line with the School Organisation Code 2013, proposals must be published for significant alterations, which include an enlargement of the premises of a school, which would increase the capacity of the school by at least 25% as compared with the school's capacity on the appropriate date.

1.1 The Proposal Relating to this Statutory Consultation

Increase capacity of Ysgol y Faenol from 186 to 315

1.2 The Vision for the Catchment Area

The statutory consultation relates to Ysgol y Faenol only. However, the re-organisation that is taking place in the city of Bangor forms part of Gwynedd Council's long-term vision for the catchment area.

New school for Garnedd increasing capacity from 210 to 420. Close Ysgol Babanod Coed Mawr and Glanadda. Increase the capacity of Glancegin to receive additional foundation phase pupils. Improvements to part of Ysgol Hiracl. Consideration given to Secondary provision to include the condition of existing buildings and a new build for Ysgol Ein Harglwyddes.

2. The Consultation

This consultation will be held between **18 September and 30 October 2018**.

The consultation relates to Ysgol Y Faenol, and therefore responses to this consultation should comment on the proposal as described in paragraph 1.1 above.

The consultation document will be distributed, in accordance with the Welsh Government School Organisation Code:

Requirements of the Organisation Code 006/2013	Distributed to...
Retaining authority or proposed retaining authority of any school which the proposals are likely to affect	Gwynedd Council
Any other local authority which the proposals are likely to affect – including, in the case of designated LEA provision, any authority which places or is likely to place pupils on statement within it	Powys, Denbigh, Conwy and Anglesey Councils
Church in Wales Diocesan Authority and the Catholic Church for the area where any school likely to be affected by the proposal is located	Church in Wales Bangor Diocesan Authority
Any other relevant religious body for any school which the proposal is likely to affect	Catholic Diocesan Authority
The governing body of any school which is the subject of proposals and the governing bodies of other schools which the proposal is likely to affect, including those which could receive any pupils who have been displaced	Governing Bodies of Ysgol Friars, Ysgol Tryfan, Ysgol Glanadda, Ysgol Glancegin, Ysgol Babanod Coedmawr, Ysgol y Garnedd, Ysgol y Faenol, Ysgol Hirael, Ysgol Llandygai, Ysgol Cae Top, Ysgol Ein Harglwyddes
Parents (and future parents, where possible), carers and guardians, and the staff of those schools	Parents, carers, guardians, and the staff of Ysgol Tryfan, Ysgol Friars, Ysgol Glanadda, Ysgol Glancegin, Ysgol Babanod Coedmawr, Ysgol y Garnedd, Ysgol y Faenol, Ysgol Hirael, Ysgol Llandygai, Ysgol Cae Top, Ysgol Ein Harglwyddes
Welsh Ministers	Carwyn Jones AM, Jeremy Miles AM, Mark Drakeford AM, Vaughn Gething AM, Lesley Griffiths AM, Ken Skates AM, Kirsty Williams AM, Alun Davies AM, Julie James AM
Assembly Members (AMs) and members of Parliament (MPs) representing areas served by any school which is the subject of proposals	<u>AM for Arfon Constituency</u> Sian Gwenllian AM <u>Regional AMs North Wales</u> Michelle Brown AM Llyr Gruffydd AM Mark Isherwood AM Mandy Jones AM <u>MP for Arfon Constituency</u> Hywel Williams MP
Estyn	Meilyr Rowlands – Education and Training in Wales Chief Inspector
Teachers' Unions and relevant staff unions representing schools and other staff in any school which is the subject of proposals	Representatives of ASCL, UCAC, GMB, NEU, NAHT, UNSAIN, NASUWT
The relevant Regional Education Consortium	Arwyn Thomas – Chief Officer GwE Ieuan Jones – North Wales Consortium Co-ordinator
The relevant Regional Transport Consortium	-

The Police and Crime Commissioner for the area served, or intended to be served by any school which is the subject of proposals	Arfon Jones - North Wales Police Commissioner
Any community or town council for the area served, or intended to be served by any school which is the subject of proposals	City of Bangor Council Cyngor Cymuned Pentir
In the case of proposals affecting the nursery provision, any independent provider that the proposals could affect	Tir na n-Og Daycare, Ffalabalam Nursery, Nursery Wlpan Bera, Busy B's Bangor Nursery, Cylch Meithrin Talybont a Llandygai, Cylch Meithrin Penrhosgarnedd, Caban Cegin, Caban Ysgol Hiracl, Cylch Ysgol Cae Top. Cylch y Garnedd
In the case of proposals affecting the nursery provision, the Children and Young People Partnership and/or The Early Years Development and Child Care Partnerships, where these partnerships exist	Gwynedd Ni Mudiad Meithrin – early years specialists
In the case of proposals affecting the LEA provision, any health body or relevant third sector body with interest in the proposals.	Representative for Betsi Cadwaladr University Health Board
In the case of proposals affecting the secondary provision, any further education establishments which serve the school area.	Representative of Llandrillo Menai Group
In the case of proposals affecting the secondary provision, parents of pupils attending primary schools and who would normally transfer to that secondary school.	Parents of Ysgol Tryfan, Ysgol Glanadda, Ysgol Glancegin, Ysgol Babanod Coedmawr, Ysgol y Garnedd, Ysgol y Faenol, Ysgol Hiracl, Ysgol Llandygai, Ysgol Cae Top, Ysgol Ein Harglwyddes
Other	Meri Huws - Welsh Language Commissioner, Head teachers of all Gwynedd schools, All Gwynedd Council Councillors Mantell Gwynedd

This consultation document will be published by the Governing Body of Ysgol y Faenol on the Gwynedd Council website at www.gwynedd.llyw.cymru/modernisingeducation and copies will be available on request from the Modernising Education Office.

During the consultation period officials will hold “drop-in” session in order for individuals to ask questions and to discuss the proposal with Governors, teaching and ancillary staff, parents and members of the public. See below for the dates and times for these sessions.

Group	Date	Time	Location
Staff	Tuesday, 9 October 2018	16:00-17:00	Ysgol y Faenol
Parents / Public	Tuesday, 9 October 2018	17:00-19:00	Ysgol y Faenol
Parents / Public	Wednesday, 10 October 2018	15:30 – 18:00	Ysgol y Faenol

The Governing Body of Ysgol y Faenol will consider comments received during the consultation period before a decision is made regarding the next steps. The Governing Body of Ysgol y Faenol will decide whether to continue with the proposal, and whether a Statutory Notice on the proposal be published.

As part of the consultation process, a background information pack will be available at the school, in local libraries and on the Council's website www.gwynedd.llyw.cymru/modernisingeducation. This pack includes

- School Organisation Code 006/2013
- School Standards and Organisation (Wales) Act 2013
- Excellent Primary Education for Children in Gwynedd
- The Welsh Government's Faith in Education Document
- Statistics Pack (2017-18)
- Language Impact Assessment
- Community Impact Assessment
- Equality Assessment
- Cabinet Report and Decision Notice – January 2017

If you wish to receive this document in a different format, please contact the Modernising Education Office on 01286 679247.

Consultation with Children and Young People

Arrangements will be made to obtain the views of children who attend Ysgol y Faenol. Designated sessions will be held with small groups of pupils, the exact arrangements to be confirmed. The consultation document for children and young people together with a response form can be found on the Council's website www.gwynedd.llyw.cymru/modernisingeducation together with a response form/questionnaire. This will enable individual children and young people who do not attend a session to have an opportunity to respond to the consultation.

How to Respond to the Consultation?

You can respond to this consultation by completing the response form at the end of the consultation document. Please address all responses to:

E-mail: modernisingeducation@gwynedd.gov.uk

Post: Modernising Education Office
Gwynedd Council
Shire hall Street
Caernarfon
Gwynedd
LL55 1SH

Note – All responses, whether by post or e-mail, must arrive at the Council Headquarters by no later than **13.00 on Tuesday, 30 October 2018.**

3. Background Details

3.1 How the Proposal was developed

The proposal was developed in line with achieving the aims of existing strategies. The “Excellent Primary Education of the Best Quality for the Children of Gwynedd” Strategy was submitted to the Full Council on 2nd April 2009. The strategy aimed to review primary schools in line with secondary catchment areas, and the criteria were established in order to prioritise the catchment areas which should be reviewed in Gwynedd.

The Strategy was unanimously accepted by the Council, with the vision being to:

“Provide education of the highest possible quality that will provide the county's children with the experiences, skills and confidence to develop into bilingual, successful and well-rounded citizens”.

Six principal aims are identified within the strategy, namely:

- 1) Appropriately-sized classes and high quality school leadership
- 2) Promote and strengthen the Welsh language
- 3) Develop a pro-active and creative long-term scheme
- 4) Make the best use of available resources
- 5) Create a learning environment of the best possible quality for the County's children and teachers
- 6) Develop schools into establishments that are central to community activity.

The following strategies and objectives were also considered as the proposal developed:

- Towards 2025 – The Future of Education and Training for Children and Young People in Gwynedd
- 21st Century Schools Strategy
- Gwynedd Welsh Language Strategy

At the end of 2016, the Welsh Government announced that there was an opportunity for Local Authorities with the capacity, to fulfil additional projects within Band A of the 21st Century Schools Programme. This confirmation enabled the Council to commence the review of the current education provision in Bangor as part of a proposed financial package worth £12,730,000, which would include a contribution from the Council.

The review would take into account the impact of the new housing developments in Bangor on the capacity of local schools’ to admit pupils. A developer has obtained planning permission to build 245 dwellings, with several houses already built. The firm is committed to contributing £1,115,387 towards adapting the primary educational provision in Bangor.

At the Cabinet meeting held on 17 January 2017, a recommendation was approved, “to request permission to commence local discussions as outlined in the report on reviewing primary education provision in Bangor”

Then at the Cabinet meeting held on the 13th March 2018, the Cabinet decided to hold a statutory Consultation on the proposal to re-organise the education provision in Bangor, in line with the requirements of Section 48 of the School Standards and Organisation Act 2013. A Statutory Consultation was held between 10 April and 22 May 2018, on the proposal to close Ysgol Glanadda and Ysgol Babanod Coedmawr on the 31 August 2020, and offer pupils a place at Ysgol y Garnedd (subject to parental choice); and increase the capacity of Ysgol Y Garnedd to 420.

In addition to holding a pre-consultation with the Church in Wales about increasing the capacity of Ysgol y Faenol to 315 in accordance with the requirements of the School Organisation Code 2013.

3.2 Catchment Review Panel (CRP) Bangor

The Bangor Catchment Review Panel (CRP) was established during June 2017, several meetings were held between June and November 2017, with the last meeting held on 29 November 2017. Representatives were invited from each of the schools within the catchment area, including, head teachers, chairs of the governors and a parent governor. An invitation was also extended to local councillors, a representative of the Church in Wales (Bangor Diocese) and the Catholic Church.

During the meetings, several options for primary education in Bangor were considered in relation to future sustainability, including an appropriate response to an increase in the demand for places in the Penrhosgarnedd area and improving provision for the city's learners. As part of the process, several aims for consideration were identified for learning provision in the Bangor catchment area namely to:

- Ensure an adequate number of places for every child in the appropriate locations;
- Ensure that no school is overcrowded;
- Ensure that no school is assessed as being in condition C or worse;
- Reduce substantial surplus places in schools or increase effectiveness;
- Reduce range cost per head for educational provision in the catchment-area;
- Ensure that class sizes are appropriate in the primary schools;
- Ensure that there are not over 25 pupils of the same age in one class;
- Ensure that there are no more than 20 pupils of different ages in one class;
- Reconcile the quality of education in the catchment-area;
- Ensure that no head teacher spends more than 20% of their time teaching;
- Develop the use of schools as a community resource;
- Improve additional learning needs provision in the catchment area.

The main issues identified by the CRP members were:

- The need for any option to include improvements and increase capacity for some Bangor school buildings
- Consideration could be given to any impact from the traffic situation in Penrhosgarnedd.
- Consideration of language issues
- Ensuring appropriate arrangements for the children of Ysgol Babanod Coedmawr and Ysgol Glanadda
- The consideration of any suitable development sites available in Bangor.

Following the input of CRP members and the presentation of a shortlist of possible options, a questionnaire was sent to members of the CRP to submit comments from the relevant schools regarding the proposed options. In terms of the comments received, the response favoured options 3 and 10.

Option 3

Extend Y Faenol increasing capacity from 186 to 315. New school for Garnedd increasing capacity from 210 to 420. Close Ysgol Coed Mawr and Glanadda. Increase the capacity of Glancegin to receive additional foundation phase pupils. Improvements to part of Ysgol Hiracl. Consideration given to Secondary provision to include the condition of existing buildings and a new build for Ysgol Ein Harglwyddes.

Option 10

Increase Y Faenol capacity (270). Garnedd to move to a new site and capacity increased (330). Modify the Glanadda site to accept Coed Mawr pupils (90). Increase the capacity of Glancegin to receive additional foundation phase pupils. Improvements to part of Ysgol Hirael. Consideration given to Secondary provision to include the condition of existing buildings and a new build for Ysgol Ein Harglwyddes.

3.3 Capital Investment

The size of the package available to modernise the provision of primary education in the City of Bangor is an important part of the context. After discussions began in the catchment area, a capital investment programme was adopted by the Welsh Government under the banner of the 21st Century Schools Programme. It would potentially include a total investment of £12.7 million, of which £6.35 million being a grant from the Welsh Government. There is also a commitment from a housing development company as part of an agreement for a new development at Goetre Uchaf in Penrhosgarnedd.

The grant from the Welsh Government will be subject to the approval of the full business case. In order to ensure that a change in the direction of the Project does not affect compliance with the terms and conditions of the grant, the published options being considered by the options appraisal (section 3.4) have been developed within the context of the needs of the business case.

3.4 Evaluating Different Options

An options appraisal was completed in order to summarise the main advantages and disadvantages of the options considered as part of the long list of possible options. All the options were evaluated against the CRP factors, taking into account the School Organisation Code 2013, Gwynedd Council Re-organisation Strategy, the Bangor catchment areas vision and other relevant factors.

A copy of the full options appraisal has been included as an annex to this document. **(Appendix 1)**

Possible Options

A number of options were discussed prior to creating the long list of options. These options were based on the potential way forward after considering all of the schools within the catchment area and by seeking ways which would maintain and improve educational standards in the catchment area.

The options included:

- Developing co-operation/federation options between some or all of the current schools without closing schools.
- Developing co-operation/federation options between some or all of the current schools after closing some schools.
- Closing some primary schools by transferring pupils to nearby schools without capital investment or co-operation between the remaining schools.
- Closing some primary schools by transferring pupils to nearby schools without capital investment and establishing a co-operation between the remaining schools.
- Closing some primary schools and establishing new schools following capital investment
- Establish one 3-16 or 3-18 school on one site for the pupils of the entire catchment area.

3.5 Long List of Possible Options

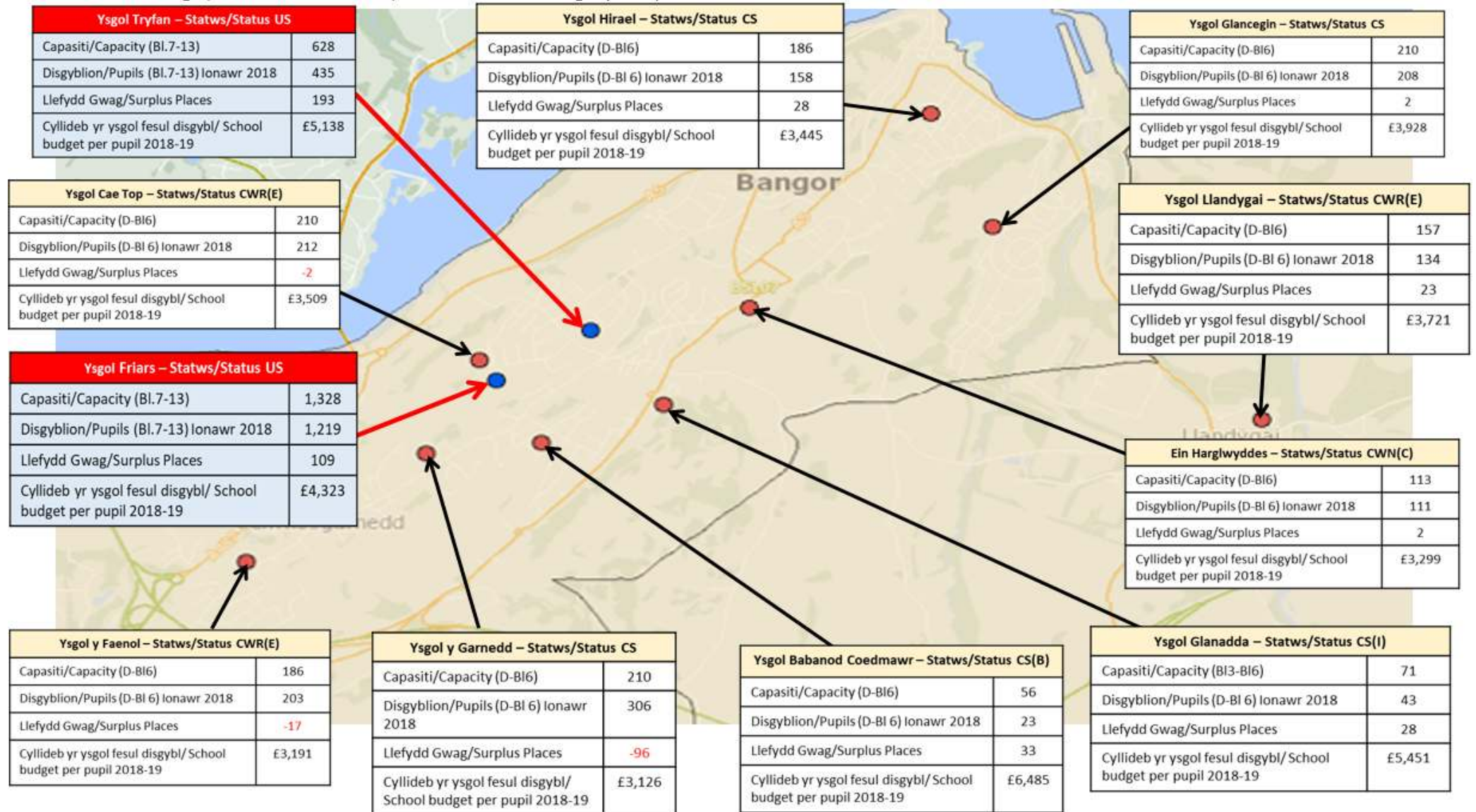
A long list of options was created following discussions with CRP members:

Status Quo	Do nothing.
Option 1	Extend Y Faenol increasing the capacity from 186 to 270. Close Ysgol Coed Mawr, Glanadda and Garnedd. Establish a new school on 2 sites (infant and junior) with the infants at Coed Mawr (180) and juniors at the Garnedd site (240). Increase the capacity of Glancegin to receive additional foundation phase pupils. Improvements made to part of Ysgol Hiracl. Consideration given to Secondary provision to include the condition of existing buildings and a new build for Ysgol Ein Harglwyddes.
Option 2	Close Ysgol Coed Mawr, Glanadda, Y Faenol and Garnedd. Establish a new school with a capacity of 690. Increase the capacity of Glancegin to receive additional foundation phase pupils. Improvements made to part of Ysgol Hiracl. Consideration given to Secondary provision to include the condition of existing buildings and a new build for Ysgol Ein Harglwyddes.
Option 3	Extend Y Faenol increasing capacity from 186 to 315. New school for Garnedd increasing capacity from 210 to 420. Close Ysgol Coed Mawr and Glanadda. Increase the capacity of Glancegin to receive additional foundation phase pupils. Improvements to part of Ysgol Hiracl. Consideration given to Secondary provision to include the condition of existing buildings and a new build for Ysgol Ein Harglwyddes.
Option 4	New build for Garnedd, capacity from 350 to 380. New school for Coed Mawr and Glanadda to include places for additional children from Pen y Ffridd (Goetre Uchaf). Extend Y Faenol to c.250 and address traffic problems. Increase the capacity of Glancegin to receive additional foundation phase pupils. Improvements to part of Ysgol Hiracl. Consideration given to Secondary provision to include the condition of existing buildings and a new build for Ysgol Ein Harglwyddes.
Option 5	One lifelong learning school in Bangor (2,746 + 306). Close all existing primary and secondary schools.
Option 6	Combine Ysgol Tryfan and Ysgol Friars and establish a new Welsh medium school (1,347 + 306) building a new primary school on the current Tryfan site (420) and extending Ysgol Y Faenol (270). Close Ysgol Coed Mawr, Glanadda and Garnedd. Increase the capacity of Glancegin to receive additional foundation phase pupils. Improvements to part of Ysgol Hiracl. New build for Ysgol Ein Harglwyddes.
Option 7	Combine Ysgol Tryfan and Ysgol Dyffryn Ogwen on a new site (700 + 150?). New primary school built on the current Tryfan site (420) and Ysgol Y Faenol (270) extended. Close Ysgol Coed Mawr, Glanadda and Garnedd. Increase the capacity of Glancegin to receive additional foundation phase pupils. Improvements to part of Ysgol Hiracl. New build for Ysgol Ein Harglwyddes.
Option 8	Close Glanadda and Coed Mawr. Extend Ysgol Y Faenol (270). New build for Garnedd (380-420 children). New Building for Ysgol Ein Harglwyddes (120) during the second phase (through Church in Wales funding). Establish community sports facilities shared by Garnedd, Friars, Cae Top (as at Parc Eirias). Increase the capacity of Glancegin to receive additional

	foundation phase pupils. Improvements to part of Ysgol Hirael. Consideration given to Secondary provision to include the condition of existing buildings.
Option 9	Rebuild Ysgol Ein Harglwyddes on the current site (120). Provide an extension for Glanadda (90) to merge with Ysgol Coed Mawr. Rebuild Coed Mawr to accommodate the overflow from Faenol and Garnedd (240). Possibly Parc Cegin. Re-introduce bus service for pupils. Ensure enough capacity for population growth. Increase the capacity of Glancegin to receive additional foundation phase pupils. Improvements to part of Ysgol Hirael. Consideration given to Secondary provision to include the condition of existing buildings.
Option 10	Increase Y Faenol capacity (270). Garnedd to move to a new site and capacity increased (330). Modify the Glanadda site to accept Coed Mawr pupils (90). Increase the capacity of Glancegin to receive additional foundation phase pupils. Improvements to part of Ysgol Hirael. Consideration given to Secondary provision to include the condition of existing buildings and a new build Ysgol Ein Harglwyddes.
Option 11	New build for Y Faenol (270). Garnedd to move to a new site and capacity increased (420). Close Coed Mawr and Glanadda. Increase the capacity of Glancegin to receive additional foundation phase pupils. Improvements to part of Ysgol Hirael. Consideration given to Secondary provision to include the condition of existing buildings and a new build for Ysgol Ein Harglwyddes.
Option 12	Extend Y Faenol to increase the capacity from 186 to 360. New school for Garnedd increasing capacity from 210 to 330. Close Ysgol Coed Mawr and Glanadda with pupils sent to Ysgol Y Faenol. Increase the capacity of Glancegin to receive additional foundation phase pupils. Improvements to part of Ysgol Hirael. Consideration given to Secondary provision to include the condition of existing buildings and a new build for Ysgol Ein Harglwyddes.

4. Existing Arrangements in Bangor

Existing primary provision in the Bangor catchment area includes, 2 Secondary Schools (Friars and Tryfan) 9 primary schools (Ysgol Y Garnedd, Hirael, Y Faenol, Llandygai, Cae Top, Glancegin, Babanod Coedmawr, Glanadda and Ein Harglwyddes).



5. Case for change

5.1 Background

Ysgol y Faenol is a Welsh Medium Voluntary Aided (Church in Wales) primary school located in Penrhosgarnedd, Bangor. The school was established in 1954 and caters for pupils within the designated catchment area surrounding area.

The below diagram outlines the catchment area of Ysgol y Faenol:



A review of the problems associated with the existing arrangements at Ysgol y Faenol has clearly established that:

- The demand for education in the Penrhosgarnedd area has increased and this is also true for pupil's numbers at Ysgol y Faenol, where the school is currently over capacity.
- The existing school building does not meet the Government's 21st Century Schools standards, in terms of facilities and space it offers.
- The site and buildings are insufficient in meeting the needs of the wider community.
- The cost per pupil at Ysgol y Faenol is £3,191 which is slightly lower than the county average of £3,777.
- New housing developments in Bangor will potentially impact on the capacity of local schools to admit pupils. A developer has obtained planning permission to build 245 dwellings, and several houses have already been built.
- Staff and pupils have to transfer between the mobile classrooms and the main school building
- Access/car parking at the school is limited and causes disruption at the school and surrounding area during drop-off/pick up times.

As a result the intention of the proposal is to increase the capacity from 186 to 315 ensuring suitability for teaching and learning in a 21st Century environment.

In addition, the Bangor area has been prioritised for a review of the existing educational provision as it faces several challenges which include:

- High percentage of surplus spaces in Ysgol Babanod Coedmawr and Ysgol Glanadda
- All other primary schools in Bangor have no more than 10% surplus places
- A number of primary schools in the Catchment Area are full, with some where pupil numbers exceed capacity
- The cost per pupil in the majority of the catchment area’s primary schools are slightly below the county average of £3,777
- There is a range in cost per pupil between two primary schools in Bangor of £3,359, between Coedmawr (£6,485) and Ysgol Garnedd (£3,126).

The aim for the proposed investment is that it will address Gwynedd Council and Welsh Government strategic goals to deliver sustainable Welsh medium education provision, including:

- Improving the learning environment for more pupils and increasing the number of pupils who will benefit from a 21st Century learning environment
- Better consistency in the standard and quality of education provided in the catchment area
- Improving the efficiency of the school state by reducing the number of buildings in poor condition
- Making a significant contribution towards reducing surplus places
- Releasing funding to be spent on children within the education system rather than on buildings
- Rationalising the cost per pupil in schools, by reducing the cost per pupil to equal or better than the County average of £3,777 for primary.
- Better consistency in the size of classes and a reduction in the age range within primary school classes
- Ensuring strong leadership and management

5.2 Pupil Population and Projections

Pupil numbers in Gwynedd schools have varied since 1975, however, in general there has been a decline of around 18% in the number of pupils across the county. Therefore, resources are spent each year on maintaining inefficient buildings and systems rather than on education for children and young people.

The below table summarises pupil numbers in the catchment area between 1980 and 2017, it shows that the numbers at Ysgol y Faenol have increased by 55% over the last 25 years.

Ysgol School	Niferoedd [Meithrin – Bl.6 (Oed 3-11)] Number [Nursery - Yr.6 (Age 3-11)]									1980-2017	1980-2017
	1980	1985	1990	1995	2000	2005	2010	2015	2017	twf / growth	% twf / growth
	Glanadda	128	83	87	89	61	63	45	42	41	-87
Coed Mawr	73	67	48	90	54	49	57	40	28	-45	-62%
Y Garnedd	218	185	191	268	271	312	325	346	338	120	55%
Hirael	189	167	168	221	223	252	201	168	195	6	3%
Y Faenol	141	108	110	147	244	243	244	253	219	78	55%
Llandygai	128	128	135	150	176	169	181	143	149	21	16%
Cae Top	243	170	207	195	212	216	251	242	240	-3	-1%
Ein Harglwyddes	135	149	113	151	123	113	115	126	123	-12	-9%
Glancegin	309	235	326	328	264	226	207	229	251	-58	-19%
Ardal / Area	1564	1292	1385	1639	1628	1643	1626	1589	1584		

(Source: September 2017 Data)

The table below shows Pupil capacity information for Ysgol y Faenol, it shows that the school has been over capacity for a number of years.

	Capacity (R-Yr6)				
	September 2017	September 2016	September 2015	September 2014	September 2013
Ysgol y Faenol Capacity	186	186	186	186	184
Pupil Numbers (R-Yr6)	206	206	223	229	223
Surplus	+20	+20	+37	+43	+39
Surplus %	10.75% Over capacity	10.75% Over capacity	19.92% Over capacity	23.11% Over capacity	21.19% Over capacity

(Source: Data September 2017)

Currently the school accepts a large percentage of children outside the catchment area. Although not all pupils living within Ysgol y Faenol catchment area are currently attending the school, the proposal to extend the capacity of the school from 186 to 315 will help manage the future demand for education spaces in the Penrhosgarnedd area.

This table shows the catchment area's pupil population for the current year:

School	Numbers on Roll (January 2018)	
	Full Time	Part Time
Glanadda	43	-
Coedmawr	23	5
Y Garnedd	306	33
Hirael	158	28
Y Faenol	203	14
Llandygai	134	14
Cae Top	212	27
Ein Harglwyddes	111	11
Glancegin	208	37

Source: January 2018 Data

Future projections for the catchment area over the next 5 years

School	2018	2019	2020	2021	2022
Glanadda	36	38	28	32	34
Coedmawr	28	28	26	30	29
Y Garnedd	334	333	337	328	326
Hirael	191	197	188	188	188
Y Faenol	206	206	206	200	192
Llandygai	138	144	141	140	140
Cae Top	240	240	240	240	240
Ein Harglwyddes	121	116	115	106	94
Glancegin	264	262	268	261	261
Total	1558	1564	1549	1525	1504

6. The Proposal

Summary of the Proposal

Following the appraisal of the possible options, the preferred direction and the proposal which is the subject of the statutory consultation is to increase the capacity of Ysgol y Faenol from 186 to 315 from 1 January 2021.

Location	Ysgol y Faenol	
Age range	3-11	
The school category (community, voluntary aided, voluntary controlled, foundation)	Voluntary Aided	
Language category	Welsh Medium	
Implementation Date	1 January 2021	
Predicted Numbers – January 2021	<i>Nursery</i> 30*	<i>Reception – Yr 6</i> 176*
Admission Number	<i>Nursery</i> 30	<i>Reception – Yr 6</i> 45
Capacity (based on Welsh Assembly Government Circular 21/2011 ‘Measuring the Capacity of Schools in Wales’)	<i>Nursery</i> 30	<i>Reception – Yr 6</i> 315
Quality of the buildings and classrooms (Building Condition Category)	A	

*Note that we expect further information - the figure does not include an estimate of the increase of additional pupils through the new housing development.

This option would mean:

- a) Building a school with the a 21st Century Schools standards, and the highest curriculum standard.
- b) Improved working environment for staff
- c) A reduction in building and maintenance costs
- d) Demolishing the current Community Centre in order to create a new entrance by relocating and improving resources for the Community.

6.1 Quality of Education

The Council is committed to providing education of the best possible quality which will provide the County’s children with the experiences, skills and confidence to develop into bilingual, successful and well-rounded citizens.

It remains a high priority to provide the best possible learning experience for all learners within the County, ensuring an exciting and broad curriculum, as well as the extra-curricular activities which motivate pupils to learn and understand leading to improved standards.

The Council has decided to invest in school system, in order to improve and secure consistency in pupils’ educational and learning attainment. It also seeks to reduce the difference in performance between schools and within schools.

In line with the Welsh Government categorisation system that considers schools standards, alongside the school's capacity to improve so as to understand the level of support the school needs.

Category	What the category means
Green	A highly effective school which is well run, has a strong leadership and is clear about its priorities for improvement
Yellow	An effective school which is already doing well and know the areas it needs to improve
Amber	A school in need of improvement which needs help to identify the steps to improve or to make change happen more quickly.
Red	A school in need of greatest improvement and will receive immediate, intense support.

The Welsh Government gave Ysgol y Faenol green category

School	Support Category
Y Faenol	Green

Summary of Estyn reports:

School	Year of Inspection	How good are the outcomes?	How good is the provision?	How good is the leadership and management?
Y Faenol	2010	Good	Good	Good

(Source: Estyn Website)

Current Performance

- It was noted that pupils achieve good standards in school
- The standards of teaching are good and the school offers a wide-range of experiences
- The school has effective support and guidance which contributes positively to pupils' wellbeing.

Prospects for improvement

- It was noted that the prospects for improvement were good.
- It was noted that leadership was effective.
- It was noted that there are high expectations and common values regarding learning. In addition, the values of behaviour, relationship are also good.
- It was noted that the dedication of all staff towards their work was going to drive the school into further success.

Recommendations

- R1) It was noted that there is a need for improvement in Welsh written work in key stage two.
- R2) Encourage pupils to be responsible for their own self-learning.
- R3) Make sure there is a link between a self-evaluation report and a school development plan with individual pupil targets

Quality of Education and Standards within Ysgol y Faenol:

KS2 achieving at least level 4 in the core subject 2017					
	CSI	English	Mathematics	Science	Welsh
School	96.3%	100.0%	96.3%	100%	84.6%
Gwynedd average	92.1%	93.2%	93.3%	93.8%	91.1%
Wales Average	89.5%	91.1%	91.6%	92.2%	91.6%

6.2 Summary of the Effect of the Current Proposal on Improving Educational Standards

If the proposal is implemented, it is not envisaged that the proposal will have an impact on the Foundation Phase or the Key Stage 2 at Ysgol y Faenol.

6.3 School Capacity

Appropriate Class Size and Age Range

Our expectation is that as far as possible, there will be appropriately sized classes in primary schools so that children within the county receive the best possible experiences and opportunities.

Increasing the size of Ysgol y Faenol to 315 would mean a structure that would include a class and a half for all ages i.e. access for 45 children in each year, between Reception and Year Six.

The below table shows the current classroom sizes of Ysgol y Faenol

(Source: September 2017 Data)

School	Nursery	Reception	Yr 1	Yr 2	Yr 3	Yr 4	Yr 5	Yr 6	Total	No. of Classes	Largest Class	Smallest Class	Average Class Size
Ysgol y Faenol	13	30	30	30	30	29	30	27	219	8	30	27	27.3

Gwynedd Council aims to have class sizes of between 12-25 pupils, where children are all of the same age range. The age range within classes is also a reason for ensuring suitable provision for the future.

Gwynedd Council is currently consulting on adopting new principles and provide future education system foundations which will be fit for purpose. A proposed education system for primary schools has been assessed based on general principles:

- Leadership arrangements which aim to offer 80% of non-contact time for the head teacher
- Classes of no more than two age-groups.

These objectives would address the biggest challenge that the primary sector faces, head teachers with inadequate time to lead, and teachers in small schools who have to teach a broad range of children of various ages and abilities within the same class.

6.4 Management and Leadership

Gwynedd Council recognises the importance of strong leadership at a school as a means of maintaining and improving standards. The following steps have been implemented to ensure strong leadership in Gwynedd schools for the future:

- GwE train a Senior manager from every secondary school to develop their personal leadership skills, and to develop their schools middle managers;
- Successful schools share good practice and hold Leadership Development dates for the managers of the rest of the schools;
- School to school plans ensure that school leaders collaborate and develop a leader's specialisation;
- Encourage prospective leaders to gain NPQH qualification;
- Head teachers mentoring scheme;
- Catchment Area Strategy Leader Pilot Scheme implemented to promote and develop strategic leadership in Gwynedd

Our expectation is that head teachers will have a fair opportunity to provide professional leadership and management for their schools. In addition, we expect school governing bodies to lead schools effectively within their budgets for the benefit of pupils. We expect schools to have the best staff to provide education of the highest quality.

Impact on leadership and management

Work conditions are required that enable head teachers to establish a productive and positive environment in order for pupils to reach their potential. In addition, head teachers are responsible for setting up a culture of continuous improvement which is evaluated and offers support to the teachers and other middle managers in their schools. One of the biggest challenges facing the primary sector is that head teachers do not have sufficient time to lead in very small schools, and that there is a need to teach a wide range of children of different ages and abilities in the same class. Estyn (2013) states:

“Leadership and processes to improve quality are usually better developed in large primary schools. In small primary schools, many head teachers have a significant teaching responsibility that limits the time they can devote to leading and managing and they have fewer opportunities to evaluate standards and to drive improvement.”

Schools with high numbers of children such as Ysgol y Faenol can offer a more robust structure to plan and deliver the curriculum through the establishment of middle management teams and subject and curriculum leaders. In addition, many responsibilities such as those relating to the curriculum and management issues, which can be a burden for small schools, e.g. appraisal arrangements, development plans, performance management can be centralised. It is more challenging for smaller schools to be able to create specific professional development training and development plans, and offer reasonable opportunities for staff to develop subject expertise and share good practice with peers.

6.5 Condition and Suitability of Buildings

The Council aims to provide quality primary education buildings within the county through structured planning, providing head teachers and teachers with appropriate rooms and access to playing fields and an appropriate hall for children. Buildings also need to comply with Foundation Phase and curriculum requirements.

The Welsh Government's 21st Century Schools Programme states that the teaching environment is an important factor in the provision of education.

The Estyn report *“Evaluation of the performance of schools before and after moving into new buildings or renovated property”* (2007) confirms the above opinion. The report notes that schools which have seen their buildings being renovated have noticed an improvement in pupils’ achievement and attainment. It notes that Estyn reports on individual schools show that the quality of the teaching has improved, that staff morale is higher, that attendance has been maintained and that behaviour has improved. In addition, buildings which have been improved, offer better choice and provision in terms of education within the school and activities held before and after school hours.

The table below includes the condition and suitability of Ysgol y Faenol building, as well as the maintenance costs required.

School	Conditions Category	Shortcomings of Suitability and Condition	Cost of Maintenance Required
Y Faenol	A	Suitability - Classes too small. Number of learners in temporary classes (mobiles). Parking problems outside the School. Condition – <ul style="list-style-type: none"> • Need to renew some metal windows • Need painting work outside • Need to refurbish an external ceiling to the front of the School 	£75,000

(Source: Gwynedd’s Property Department)

Key to the Categories:			
A	GOOD (No Deterioration)	C	POOR (Big Decline)
B	SATISFACTORY (Minor Deterioration)	D	BAD (Has reached the end of its life)

Our expectation is that the “learning environment” for the county’s children and teachers – i.e. the condition of the school, classroom, staff room, and play provision - meets 21st century school teaching and learning requirements. There is real concern about the condition and suitability of the county’s primary schools. The buildings require substantial investment to address health and safety matters and to achieve appropriate standards. A number of school buildings are in poor condition. The cost of upgrading and adapting the county’s school buildings to meet new curriculum requirements and expected standards are substantial.

The Council undertakes annual condition surveys of all its properties. The annual surveys inform the Authority’s Asset Management Plan and enables the prioritisation of the repair and maintenance planned works programme in schools. These surveys have also led to a substantial increase in repair and maintenance budgets since 2009/10.

6.6 Details of the Proposal

The present Faenol School is a mixture of buildings built at different times in the last half of the last century. The original School has been extended to the rear with a block of modular construction, and additional space has been provided using 'temporary' classes at the back.

In the plan, the intention is to increase the capacity of the current School to 315 learners, and it is proposed to do this by converting existing buildings, extend buildings, and dispose temporary classes.

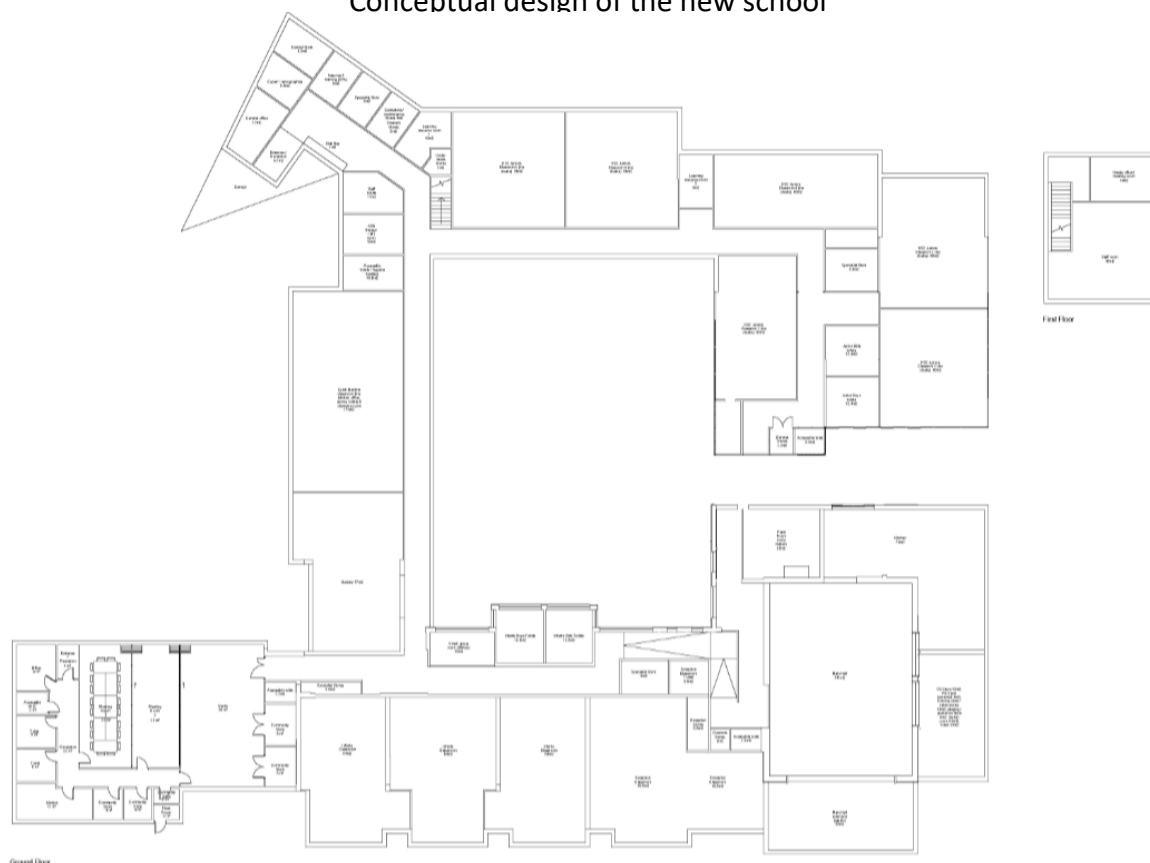
The original buildings will be re-modelled internally to provide rooms that match the expected standards in a 21st Century School. The Hall will be extended to reflect the space required for the additional numbers of pupils who will be at the School. The additional learning rooms, and temporary classrooms, will be located within the new extensions. These extensions will conform to Government's 'Building Bulletin 99' standards. In addition, the flat roof modular block will have a new skin to improve the quality of the building. In addition, as part of the development, it is intended to provide a new dedicated space for the Cylch Meithrin.

The conceptual design work has already begun. The construction work has been programmed to start in March 2019 and it is expected that the school building program to be completed by December 2020. See below the architect's first edition of the design for the site, a new school and community facilities.

Proposed Site Plan



Conceptual design of the new school



The table below gives details of the various elements will be included as part of the construction of the school, as well as the associated benefits.

Element	Description	Advantages
Class Room	Create learning areas of a suitable size for the numbers of learners, improve education provision by having flexible areas adjacent to each other.	This will improve the children's learning environment and offer a new learning experience.
Foundation phase Classrooms	Create bespoke classrooms with suitable resources. Creating openings from the foundation phase classrooms to the outside with canopies outside the openings. Suitable toilets adjacent to the classrooms.	
Canopies	The canopy provided will protect against the rain / sun outside of the Foundation Phase classes.	The children can be outside even if the weather is not favourable.
Additional Learning needs	Separate rooms for pupils with additional learning needs	This will enable children with Additional Learning Needs to have one to one lessons, or be educated in smaller groups.
Multi Use Playground	Provide all-weather play area with tarmac surface.	The play area can be used regardless of the weather.
Head Teacher's room	A new room for the Head teacher that will be suitable for meetings with parents, governors and staff.	As Head teachers are released from their teaching responsibilities to focus on leadership issues in line with national guidelines. These rooms will be a useful resource for the Head teacher.
Staff Room	A purposeful new room on the first floor, overlooking the Foundation Phase playground and the field.	The staff room will be centrally located in the School that will ensure the collaboration between staff across the School.
PPA Room	A dedicated room for staff to prepare their work away from the classroom and the Staff Room.	Provide fair opportunities for teacher to prepare in an unrestricted environment.
Reception and Administrative Rooms.	Reception area, and administrative rooms in the foyer / reception area.	Access to the School and the Cylch Meithrin / After School Club can be controlled and monitored by using minimum amount of resources. This will enable the provision of high quality services to all pupils, staff and visitors to the school.

Resources	Purposeful areas close to classrooms where practical tasks can be undertaken using the latest technology and equipment.	This will enable modern teaching to the highest standard with suitable resources and furniture.
Quiet area/Relaxation	Specific area for pupils who are unwell and a suitable place for specialists to visit.	Improve the specific area for unwell pupils to wait for their parents to collect them and for doctors, dentists, nurses, the children's welfare officers to hold meetings.
School Hall	The existing School Hall will be extended to make it suitable for assembly resource, sports, and dining hall for the whole school. A store for chairs will be built off the existing hall to release more space.	Pupils, staff and the public will benefit from this multi-use area.
Store Rooms	Create suitable storage rooms.	These improvements will improve the standards of the learning environment, health and safety and access issues.
Toilets and Hygiene Room	New modern toilets, suitable for different ages in different areas of the building. Hygiene room with specialist equipment for learners with physical needs.	
Parking	New access to site with measures to ensure pedestrian and traffic separation. Create a new car park on the site of the former Community Centre building dedicated purpose parking spaces for staff and visitors. There will be an area to drop off/pick up and an area for disabled parking.	
Kitchen	The school's existing kitchen will be extended, with modern equipment and new technology, e.g. convection oven are added.	
Heating Room and Equipment	Gas heating system to include efficient energy boilers	Improve efficiency and give the school the highest possible environmental rating.
Electric System	The existing buildings will have a new electrical system, and energy efficient lighting and equipment will be installed.	
Cylch Meithrin / Breakfast Club/ After School Club	A purpose-built space will be provided to enable these activities to divide the space with dedicated stores for each group.	Enable the current provision in the school to continue

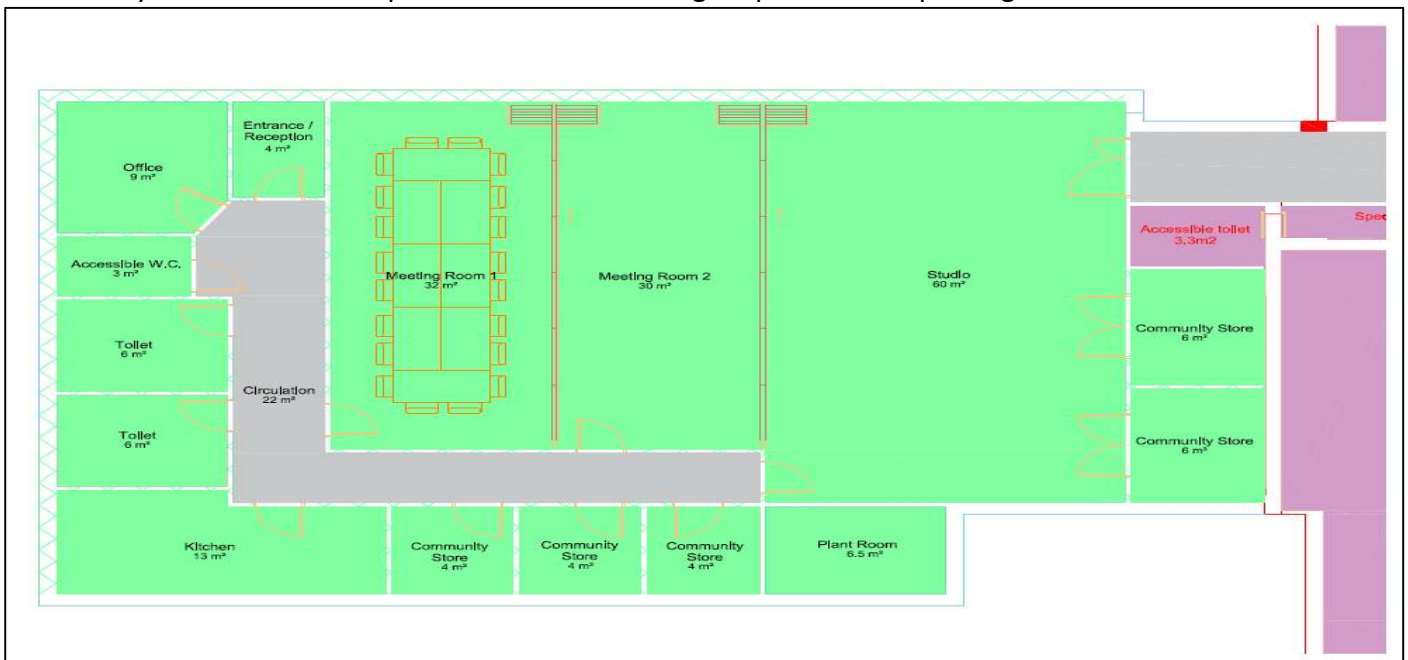
Penrhosgarnedd Community Centre

In order to provide education for the number of children envisaged in the Penrhosgarnedd area in the future, there is a need to increase the capacity of Ysgol y Faenol to 315. This will also ensure appropriate classroom arrangements for the education of pupils at the school. In order to be able to accommodate more children at the site, it will be essential to improve existing traffic and parking arrangements. The only viable way to achieve this will be by incorporating the existing Penrhosgarnedd Centre alongside the refurbished school. This will result in the existing Centre being demolished with the construction of the new provision on another part of the site.

The Council has already discussed the possibilities and options to relocate the Centre with Pentir Community Council, as the body which holds a lease of the premises from Gwynedd Council. Feasibility work has identified several options for a new community centre located on the site of the existing school with a financial contribution towards additional community facilities as with any similar situation involving different users at the school, robust arrangements would be put in place to meet the differing needs of the school and the community. The development will create opportunities for the school and the community to ensure that the site acts as a focal point for a number of activities for the Penrhosgarnedd area.

Element	Description	Advantage
Community Centre	<p>The facilities at the existing Centre will be relocated to the new building alongside the school. These resources will be available for community use, and will be managed by Pentir Community Council.</p> <p>The resources include:</p> <ul style="list-style-type: none"> Entrance/Reception Office Accessible Toilet Toilets x 2 Kitchen Store x 5 Meeting Room x 2 Studio 	<p>Enable the community to have a modern building, accessible, flexible in terms of use, and energy efficient.</p>

Please see the conceptual plan which shows the type of community resource which will be developed from new. As part of the redevelopment, there will be a new car park for the use of the school and the community on the site of the present Centre including ample disabled parking for centre users.



6.7 Proposed Transport Arrangements

When developing the proposal it is not anticipated that the proposal will have an impact on the school catchment area.

6.8 Surplus Places

National Targets for Authorities

Local authorities are expected to manage changes to catchment areas to ensure that demand and growth in the pupil population are considered when a decision is made to create a new school or expand an existing building. The choice of site and the option of a new building must ensure that sustainability and reducing the number of vacancies are at the heart of the project's objectives.

Therefore, planning for the future of education in different catchment areas needs to reflect trends in population numbers and primary pupils. The Council has already taken initial steps to respond to this challenge and this proposal contributes directly to the objective of reducing the number of vacancies and establishing a sustainable education system. Reducing vacancies will ensure that a higher percentage of the County's education budget is spent directly on education rather than maintaining expensive and inefficient school infrastructure that is not sustainable for the future.

According to Estyn, closure and pooling of schools is one way of reducing the number of vacancies, releasing savings to reinvest and raise standards. Where there are educational and sound reasons for doing so, this is a way that Gwynedd Council will follow. However, the way in which vacancies will be dealt with will vary according to the catchment area, depending on the situation and requirements of each specific catchment area. Estyn set out the notional cost of one vacancy in a primary school at £ 262, and the cost of vacancy in a secondary school at £ 510.

6.9 Financial Resources

The expectation is that Gwynedd makes the best possible use of financial resources available for the provision of education in the county. It is also sensible, wherever possible to make to make the best use of resources across the county by reducing the range of cost per pupil.

This is even more important with the extremely challenging financial climate facing the Council at present. It is therefore important that efforts are made to utilise resources as effectively as possible within the education and training system for the benefit of children and young people. This includes all resources – human, technical, construction and financial. In particular, a substantial proportion of the Education budget is spent on maintaining a very expensive and inefficient school infrastructure which in many cases was designed in the last century, or during the Victorian era. In addition there is a substantial expenditure on schools where there is a large percentage of surplus places.

For the 21st Century, there is a need to ensure that Gwynedd has a network of schools of the correct type at the appropriate locations across the county. Reducing the number of empty places and ensuring robust schools regarding size, would provide opportunities to develop inclusive and community-focused elements. Such a course of action is crucial if equal opportunities are to be promoted across the county and the impact of poverty in children and young people's lives is to be reduced.

A total of £5,231,881 was allocated to the catchment primary schools for 2018/19. This corresponds to £3,527 per pupil on average, compared to the average primary pupil cost of £3,777.

School	SHARE OF BUDGET	
	Total Budget	Cost Per Pupil
Y Faenol	£675,595	£3,191

It has to be recognised that national NNDR calculation arrangements (building’s tax), leads to an increase following capital investment, but with the NNDR fund being disseminated to authorities, it could be argued that this matter should not be ignored when identifying revenue savings.

6.10 The Welsh Language

We expect that the County’s primary schools support and improve the use of the Welsh language as a social language and as the educational language of our pupils.

In developing any proposals relating to school reorganisation, consideration must be given to the impact on the Welsh language. Maintaining and increasing the use of Welsh as a social language and a language for education is always an essential consideration in planning proposals and assessing options.

A copy of the assessment report is included in the background pack which is available on the Council’s website at www.gwynedd.llyw.cymru/modernisingeducation

6.11 The Community

In developing any proposals involving modernising education, full consideration must be given to the possible community impact. The community assessment report is included in the background pack or on the Council’s website www.gwynedd.llyw.cymru/modernisingeducation. The Governing Body of Ysgol y Faenol have adopted this assessment for the consultation.

The assessment’s conclusion notes that there is no reason why any of the options should have a negative impact on the community.

6.12 Governance and Staffing Matters

Governing Body

No anticipated changes will be made to the current governing body of Ysgol y Faenol.

Staffing Implications

Should the proposal be approved to increase the size of Ysgol y Faenol, it is not anticipated that there would be any negative changes to the schools current staffing structure, but could increase the need for additional staff as part of the process, due to the increase in capacity.

6.13 Impact on Equality

The assessment gives due focus to different equality elements such as race, gender, disability, language, religion, or belief and age-group. The assessment notes the current situation and policies and arrangements in place which would ensure that the proposal considers and aligns with equal rights. The assessment notes

that the favoured options are unlikely to have a negative impact on equality features, and it is expected that some of the features will have a positive impact.

6.14 Potential Advantages for Children and Young People

Core Aim of the United Nations Conference on Child's Rights	Advantages
Having a fair start in life	Better resources and amenities, and policies for nursery and foundation phase education provision being implemented to twenty first century standards.
Having a comprehensive variety of education and learning opportunities	Opportunities for sharing staff expertise in specific fields across the learning sectors, in order to ensure a range of opportunities as well as providing new curricular advantages.
Enjoying the best possible health and not being abused, victimised or exploited	Appropriate plans and policies to ensure progression in these matters in the catchment school.
Having access to play, leisure, sports and cultural activities	Opportunities to share expertise in these fields across the learning sector, and also to share resources and good practice, thus improving access for pupils into the leisure, sport and culture provision.
Being heard, treated with respect, and their culture, race and identity recognised	School council forums would ensure that pupils' voices are heard.
Living in a safe home and community which support physical and emotional welfare	Interagency teams could be developed around the children to ensure care and communication progression throughout the child's time at the catchment schools.
Not being disadvantaged on account of poverty	There would be an opportunity to develop cross-agency plans in order to tackle child poverty in the Berwyn catchment.

Through careful planning, the proposal could ensure that all pupils have access to the same resources and experiences.

6.15 Proposed Admission Arrangements

The Education Department of Gwynedd Council would be the Admission Authority and would operate in accordance with the County's School Admission Policy.

6.16 Information regarding Additional Learning Needs

The proposal does not have an impact on the ALN provision.

6.17 Future use of sites

The Council has a post-use policy for school buildings, as part of this proposal no Council building will be disposed of.

6.18 Potential Risks

Risk	Possible Impact	Action to Mitigate Risk
Lack of decision making	Inability to implement change due to lack of decisions which increases likelihood of disruption to pupils' education. Could cause reputational damage to the Council	Timetable with clear milestones that note when key decisions are required from the Education Cabinet Member and the Project Board
Local reluctance to support the schools after the reorganisation process	This could decrease pupil numbers and available financial resources	Sustained community contact, informing them of developments and resource benefits included in the plan.
Quality of education in the short term while schools are under review	Decrease, quality which could affect any new educational establishments while in their infancy	Monitor the schools in line with the Education department's policy. Any new educational establishment will be inspected by Estyn within its first year.

Late completion of building projects	Delayed implementation, potential disruption to pupils' education and requirement of extra short term funding	Close monitoring of building projects with regular updates to the Project Board.
Over-run in building contract costs	Requirement for additional funding	Detailed planning with project costs subject to robust scrutiny at every stage and expenditure monitored regularly
Possible Site Issues e.g. archaeological or environmental	Could delay the building work	Sites in question are existing school sites. Contract will require all essential checks to be completed before construction begins.
Site Safety	Any complications or issues could cause delays	A full Health & Safety plan will be prepared by the contractor in consultation with Council Health and Safety Officers. It will ensure full separation of children from working areas on any existing school sites that are developed. Officers will continue to assess health and safety as the development progresses.
Long term financial viability of the option	Future vulnerability for the area	The favoured option reduces educational running costs in the area and reduces the range in cost per pupil.
Gwynedd Council or Welsh Government funding delays	A significant delay could result in the project being abandoned.	Gwynedd Council's contribution has already been confirmed by the Cabinet. The creation of robust business cases and continued discussion with the Welsh Government.
Cabinet does not approve the proposal	Delay to timetable, any significant delay could mean that the project must be abandoned	Ensure the Cabinet is updated regularly
Decision referred to the Education Minister	Delay to timetable	Ensure that adequate resources and expertise are available when required. Keep the key consultees up to date as the project develops and include the possibility of referral into the project timetable
Education & Skills Minister rejects proposal (if proposal is referred)	Significant delay to the timetable would result in the 21 st Century Schools funding window being missed.	Consideration should be given that the most financially, economically and educationally beneficial option is selected.
Project Management Issues	Could cause delays	The job will be managed jointly by a client office and the Project Manager, under the supervision of the Project Board. A community support officer will foster relationships with the communities involved and keep them apprised of developments. The project team will provide administrative support.

6.19 Legal Category Relating to the Proposal

In developing this proposal, consideration must be given to the legal category.

In accordance with the School Standards and Organisation (Wales) Act 2013, schools are defined as:

- Community
- Voluntary Aided (VA) with religious designation (Church in Wales)
- Voluntary Controlled (VC) with a religious designation (Church in Wales)

The Council and the Church are joint education providers in the Bangor catchment area. The table below indicates the school's categories in the Bangor catchment area:

Category	Primary (September 2017)		Secondary (September 2017)	
	Number of school	Number of pupils (R-Yr6)	Number of schools	Number of pupils (Yr7-13)
Community	5	738	2	1,654
Voluntary Aided	1	111	0	0
Voluntary Controlled	3	549	0	0
Total	9	1,398	2	1,654

(Source: September 2017 Data)

Currently Ysgol y Faenol is a Voluntary Controlled school category. On this basis, in terms of the legal category for the statutory consultation, it will remain as a voluntary controlled school.

6.20 Other Church in Wales School's in Gwynedd

It is important for the cabinet to consider the broader context of provision. Below are details of all Church in Wales schools within the County.

Ysgol	Pellter o Fangor	Ystod Oedran	Niferoedd disgyblion Ionawr 2018	Capasiti Derbyn i B16	Llefydd gweigion Derbyn i B16	Rhagamcanion					
						Medi 2018		Medi 2019		Medi 2020	
						Niferoedd disgyblion Derbyn i B16	Llefydd gweigion Derbyn i B16	Niferoedd disgyblion Derbyn i B16	Llefydd gweigion Derbyn i B16	Niferoedd disgyblion Derbyn i B16	Llefydd gweigion Derbyn i B16
Pont y Gôf	38.3	3 – 11	96	106	10 (9%)	104	2 (2%)	91	15(14%)	98	8(8%)
Maesincla	9.3	3 – 11	252	318	66 (21%)	237	81 (25%)	239	79(25%)	239	79(25%)
Y Faenol	2.4	3 – 11	203	186	-17 (0%)	193	(-7) 0%	193	(-7) 0%	193	(-7) 0%
Foelgron	35.2	3 – 11	38	54	16 (30%)	37	17 (31%)	37	17 (31%)	40	14(26%)
Llandygai	2.3	3 – 11	134	157	23 (15%)	121	36(23%)	125	32(20%)	125	32(20%)
Llandwrog	14.7	3 – 11	42	75	33 (44%)	39	36(48%)	35	40(53%)	29	46(61%)
Llanystumdwy	25.5	3 – 11	20	47	27 (57%)	20	27(57%)	19	28(60%)	18	29(62%)
Tregarth	4.9	3 – 11	105	150	45 (30%)	101	49(33%)	97	53 (35%)	102	48(32%)
Cae Top	1.4	3 – 11	212	210	-2 (0%)	210	(-3) 0%	210	(-3) 0%	210	(-3) 0%
Beuno Sant	43.5	3-11	40	79	39 (49%)	30	49(62%)	27	52(66%)	28	51(65%)

(Source: September 2017 Data and PLASC 2018)

6.21 Pre-consultation discussions with the Church in Wales

There have been regular discussions with representatives of the Church in Wales from the start of the process. In accordance with the School Organisation Code (006/2013) it is required to hold a pre-consultation with the Church in Wales, to give them the opportunity to make comments prior to the publication of the consultation document. The pre-consultation was held between 5 June and 3 July 2018, at this point the Church had no further comments.

7. Summary of the Proposal

This proposal would mean:

Increasing the capacity of Ysgol y Faenol from 186 to 315

8. Explaining the Statutory Process

At a Cabinet meeting held on 17 January 2017, the recommendation was approved, “to request permission to commence local discussions as outlined in the report on reviewing primary education provision in Bangor”

The Governing Body of Ysgol y Faenol at a meeting on the **3 July, 2018** supported the recommendation to proceed to hold a statutory consultation period on the favoured option. This is the consultation document, which contains details of the proposal. This document was published on **18 September, 2018** and responses can be received until **13:00 Tuesday, 30 October**. **These responses will not be counted as objections, but comments**. If any one wishes to object they must do so following the publication of the statutory notice (should one be issued). During this consultation responses may include comments or questions on any aspect of the proposal (e.g. the option, sites involved, category etc.) or suggest alternative options.

Following this statutory consultation period, a report will be submitted to the Governing Body of Ysgol y Faenol in **November 2018** where a decision will be made whether or not to proceed with this proposal. This consultation report will outline the main issues raised by the consultees and will include the response of the Governing Body to the issues. The report will be published on the Gwynedd Council’s website and hard copies will be available on request. Parents, carers, guardians and staff of the school will be informed when the report is available. A number of representatives from other agencies will be informed that the consultation report is available e.g. Church representatives, Local Councils, Estyn, Welsh Ministers, relevant Assembly Members and Members of Parliament etc.

If the Governing Body of ysgol y Faenol decides to proceed following consideration of the consultation report, the proposal will have to be issued in the form of a statutory notice. The notice will be published on a school day and there will be an “**objection period**” of 28 days from the date when the proposal is published. Anyone can object to the proposal. The notice will be posted on the Gwynedd Council website and also close to the main reception in the school involved in the proposal; copies will be sent to the schools to be distributed to pupils, parents, carers and guardians and staff. Hard copies will be available on request to the modernising education office.

After the objection period closes, the Governing Body of Ysgol y Faenol will publish a summary of the statutory objections and the Governing Body of Ysgol y Faenol’s response to the objections in an “objection report”. The objection report will be posted on the Gwynedd Council’s website and hard copies will be available on request. Parents, carers and guardians and staff of the school will also be informed that the objection report is available. A number of representatives from other agencies will be informed that the objection report is available.

If there are no objections and the proposal does not require approval of the Welsh Ministers, the Governing Body of Ysgol y Faenol as the proposer will meet to determine whether or not to proceed.

If objections are received, the proposal requires determination by the local authority, the proposer must inform Gwynedd Council of the proposal by sending the consultation document, the consultation report, the published notice, the objections and the objection report with 35 days of the end of the objection period. When the Cabinet has reached its final decision, the decision will be put in writing along with explicit reasons for the decision. The decision will be posted on the Gwynedd Council's website, and parents, carers and guardians, staff and governors of all schools in the catchment area will be informed of the decision. A number of representatives from other agencies will also be informed of the decision.

In some instances, after the Cabinet's final decision – it is possible for the following bodies to refer the proposal to Welsh Ministers for their consideration:

- Another local authority affected by the proposal
- Appropriate religious body for any school affected
- Governing body of a voluntary or foundation school which is the subject of the proposal
- Any trust which holds land on behalf of a voluntary or foundation school which is the subject of the proposal
- Further education establishment affected by the proposal

The bodies which refer the proposal need to note the reason why they are of the opinion that the decision reached by the Local Authority is incorrect. Welsh Ministers would then decide whether the proposal affect the bodies and whether they need to consider the proposals.

9. Proposed Outline Timetable

Date	Step
June 2018	Start the pre-consultation period
18 September 2018	Statutory consultation period begins: At least 42 days for consultees to respond, at least 20 of those days being school days.
30 October 2018	Statutory consultation periods ends: Closing date for receiving comments on the proposal.
November 2018	Issue a statutory notice: If the Governing Body of Ysgol y Faenol decides to proceed with the proposal, a statutory notice will be issued and an objection period held. Any objection must be submitted within the 28 day objection period.
March 2019	Final decision: Following the objection period, if objections are received the Governing Body of Ysgol y Faenol will present a report to the Cabinet to decide whether or not to confirm the proposal. If no objections are received the Governing Body of Ysgol y Faenol will make a decision on the proposal.
March 2019	<p>Referring the decision to the Welsh Ministers: In accordance with section 54 of the 2013 Act, within 28 days of the Cabinet’s decision, the following bodies have the right to refer the Authority’s decision to Welsh Ministers for determination:</p> <ul style="list-style-type: none"> i. Another local authority affected by the proposals; ii. The appropriate religious body for any school affected iii. The governing body of a voluntary or foundation school subject to the proposal; iv. A trust holding the property on behalf of a voluntary or foundation school subject to the proposals; and v. A further education institution affected by the proposal.

Summary of the Schools statistics:

		Ysgol / School										
		Glancegin	Garnedd	Glanadda	Ein Harglwyddes	Y Faenol	Llandygai	Cae Top	Babanod Coedmawr	Hirael	Tryfan	Friars
Lleoliad yr Ysgol / Location of the School		LL57 4ST	LL57 2LX	LL57 4SG	LL57 2UT	LL57 2NN	LL57 4HU	LL57 2GZ	LL57 4TL	LL57 1BA	LL57 2TY	LL57 2LN
Ystod Oedran / Age range		3-11	3-11	7-11	3-11	3-11	3-11	3-11	3-7	3-11	11-18	11-18
Categori'r Ysgol / School's category <i>Ysgol Gymuned [CS] Community School</i> <i>Gwirfoddol dan Gymorth [VA] Voluntary Aided</i> <i>Gwirfoddol dan Reolaeth [VC] Voluntary Controlled</i> <i>Ysgol Uwchradd Sirol [US] County Secondary School</i>		CS	CS	CS (I)	VA (C)	VC (E)	VC (E)	VC (E)	CS (B)	CS	US	US
Categori Cyfrwng Iaith / Language Medium Category		Cyfrwng Cymraeg / Welsh Medium	Cyfrwng Cymraeg / Welsh Medium	Cyfrwng Cymraeg / Welsh Medium	Cyfrwng Cymraeg / Welsh Medium	Cyfrwng Cymraeg / Welsh Medium	Cyfrwng Cymraeg / Welsh Medium	Cyfrwng Cymraeg / Welsh Medium	Cyfrwng Cymraeg / Welsh Medium	Cyfrwng Cymraeg / Welsh Medium	Cyfrwng Cymraeg / Welsh Medium	Dwy Ieithog / Bilingual
Niferoedd o ddisgyblion ar y gofrestr – Ionawr 2018 / Number of pupils on the register – Ionawr 2018	Meithrin / Nursery	37	33	-	11	14	14	25	5	28	Bl. / Yr. 7-11 353	Bl. / Yr. 7-11 1,013
	Derbyn – Bl.6 / Reception – Yr.6	208	306	43	111	203	134	212	23	158	Bl. / Yr. 12-13 82	Bl. / Yr.12-13 206
	Cyfanswm / Total	245	339	43	122	217	148	237	28	186	435	1,219
Nifer o ddisgyblion ar y gofrestr am y pedair blynedd flaenorol / Number of pupils on the register for the previous four years	Medi / September 2016	235	357	50	128	236	151	240	34	159	465	1,213
	Medi / September 2015	229	346	42	126	253	143	242	40	168	484	1,226
	Medi / September 2014	218	335	43	124	259	156	236	39	164	518	1,253
	Medi / September 2013	218	333	45	123	261	158	240	53	181	526	1,269
	Medi / September 2012	205	344	41	114	237	154	245	65	195	542	1,277
Capasiti / Capacity	Meithrin / Nursery	30	30	-	16	26	23	40	15	22	-	-
	Derbyn – Bl.6 / Reception – Yr. 6	210	210	71	113	186	157	210	56	186	628	1,328
Llefydd Gweigion Medi 2017 Derbyn – Bl.6 / Surplus places September 2017 Reception – Yr.6		2 (1%)	0 (0%)	28 (39%)	2 (2%)	0 (0%)	23 (11%)	0 (0%)	33 (59%)	28 (15%)	193 (31%)	109 (8%)
Rhagamcanion Disgyblion / Pupil Projections	Medi / September 2018	264	344	36	121	206	138	240	28	191	430	1,272
	Medi / September 2019	262	333	38	116	206	144	240	28	197	436	1,280
	Medi / September 2020	268	337	28	115	206	141	240	26	188	447	1,280
	Medi / September 2021	261	328	32	106	200	140	240	30	188	447	1,279
	Medi / September 2022	261	326	34	94	192	140	240	29	188	454	1,274
Data perfformiad Ysgolion (Estyn) / School performance data (Estyn)		1xDigonol/Adequate 2xDa/Good (2013)	2xDa/Good 1xRhagorol/Excellent (2012)	2xDigonol/Adequate 1xAnfodddhaol/Unsatisfactory (2013) Monitro/Monitoring 2014	*5xDa/Good (2018)	3xDa/Good (2010)	3xDa/Good (2012)	3xRhagorol/Excellent (2016)	3xDigonol/Adequate (2015) Monitro/Monitoring 2016	3xDigonol/Adequate (2015) Monitro/Monitoring 2016	3xDa/Good (2013)	*5xDa/Good (2017)
Categori Cyflwr Adeiladau (Criteria'r Cyngor) / Category condition of buildings (Council's Criteria)		A	C	B	B	A	B	A	B	B	B	A
Dyranriad Cyllidol 2018/19 Financial Allocation		£902,301	£998,713	£223,511	£389,092	£675,595	£525,318	£788,998	£167,048	£625,551	£2,218,817	£5,456,406
Cost y disgybl 2018/19 Cost per pupil		£3,928	£3,126	£5,451	£3,299	£3,191	£3,721	£3,509	£6,485	£3,445	£5,138	£4,323

*Following the new regime of School inspection 2017

Source: January 2018 Data

Options Appraisal: Reviewing Bangor Education Provision

As part of the Process of identifying the preferred option, the options of the long list were evaluated to compare the main advantages and disadvantages of the options under consideration. Four meetings of the Catchment-area Review Panel (CRP) were held between June and November, with the final meeting held on November 29, 2017. During the meetings, several options for primary education in Bangor were considered to ensure sustainable education for the future, by responding specifically to the increased demand for places in the Penrhosgarnedd area, and to improve the provision for learners in the city. It was also explained that further funding would be available in Band B in addition to the Band A related funding, if a need was identified. As part of the process, a number of objectives to consider for the provision in the Bangor catchment-area were identified, namely:

- Ensuring enough places for each child in the appropriate locations;
- Ensure that no school is overcrowded;
- Ensure that no school is assessed in condition C or worse;
- Significantly reduce surplus places in schools or increase efficiency;
- Reduce the range of cost per pupil for the provision of education in the catchment area;
- Ensuring that class sizes are appropriate in the primary schools;
- Ensure that there are not more than 25 pupils of the same age in one class;
- Ensure there are no more than 20 pupils of different ages in one class;
- Reconcile the quality of education in the catchment area;
- Ensure that no head teacher spends more than 20% of his time teaching;
- Develop the use of schools as a community resource;
- Improve the additional learning needs provision in the catchment area.

Long list of possible options

The case for change has been established, however, the Status Quo/Do nothing model has been included for comparison purposes.

Status Quo	Do nothing.
Option 1	Extend Y Faenol increasing the capacity from 186 to 270. Close Ysgol Coed Mawr, Glanadda and Garnedd. Establish a new school on 2 sites (infant and junior) with the infants at Coed Mawr (180) and juniors at the Garnedd site (240). Increase the capacity of Glancegin to receive additional foundation phase pupils. Improvements made to part of Ysgol Hiracl. Consideration given to Secondary provision to include the condition of existing buildings and a new build for Ysgol Ein Harglwyddes.
Option 2	Close Ysgol Coed Mawr, Glanadda, Y Faenol and Garnedd. Establish a new school with a capacity of 690. Increase the capacity of Glancegin to receive additional foundation phase pupils. Improvements made to part of Ysgol Hiracl. Consideration given to Secondary provision to include the condition of existing buildings and a new build for Ysgol Ein Harglwyddes.
Option 3	Extend Y Faenol increasing capacity from 186 to 315. New school for Garnedd increasing capacity from 210 to 420. Close Ysgol Coed Mawr and Glanadda. Increase the capacity of Glancegin to receive additional foundation phase pupils. Improvements to part of Ysgol Hiracl. Consideration given to Secondary provision to include the condition of existing buildings and a new build for Ysgol Ein Harglwyddes.
Option 4	New build for Garnedd, capacity from 350 to 380. New school for Coed Mawr and Glanadda to include places for additional children from Pen y Ffridd (Goetre Uchaf). Extend Y Faenol to c.250 and address traffic problems. Increase the capacity of Glancegin to receive additional foundation phase pupils. Improvements to part of Ysgol Hiracl. Consideration given to Secondary provision to include the condition of existing buildings

	and a new build for Ysgol Ein Harglwyddes.
Option 5	One lifelong learning school in Bangor (2,746 + 306). Close all existing primary and secondary schools.
Option 6	Combine Ysgol Tryfan and Ysgol Friars and establish a new Welsh medium school (1,347 + 306) building a new primary school on the current Tryfan site (420) and extending Ysgol Y Faenol (270). Close Ysgol Coed Mawr, Glanadda and Garnedd. Increase the capacity of Glancegin to receive additional foundation phase pupils. Improvements to part of Ysgol Hiracl. New build for Ysgol Ein Harglwyddes.
Option 7	Combine Ysgol Tryfan and Ysgol Dyffryn Ogwen on a new site (700 + 150?). New primary school built on the current Tryfan site (420) and Ysgol Y Faenol (270) extended. Close Ysgol Coed Mawr, Glanadda and Garnedd. Increase the capacity of Glancegin to receive additional foundation phase pupils. Improvements to part of Ysgol Hiracl. New build for Ysgol Ein Harglwyddes.
Option 8	Close Glanadda and Coed Mawr. Extend Ysgol Y Faenol (270). New build for Garnedd (380-420 children). New Building for Ysgol Ein Harglwyddes (120) during the second phase (through Church in Wales funding). Establish community sports facilities shared by Garnedd, Friars, Cae Top (as at Parc Eirias). Increase the capacity of Glancegin to receive additional foundation phase pupils. Improvements to part of Ysgol Hiracl. Consideration given to Secondary provision to include the condition of existing buildings.
Option 9	Rebuild Ysgol Ein Harglwyddes on the current site (120). Provide an extension for Glanadda (90) to merge with Ysgol Coed Mawr. Rebuild Coed Mawr to accommodate the overflow from Faenol and Garnedd (240). Possibly Parc Cegin. Re-introduce bus service for pupils. Ensure enough capacity for population growth. Increase the capacity of Glancegin to receive additional foundation phase pupils. Improvements to part of Ysgol Hiracl. Consideration given to Secondary provision to include the condition of existing buildings.
Option 10	Increase Y Faenol capacity (270). Garnedd to move to a new site and capacity increased (330). Modify the Glanadda site to accept Coed Mawr pupils (90). Increase the capacity of Glancegin to receive additional foundation phase pupils. Improvements to part of Ysgol Hiracl. Consideration given to Secondary provision to include the condition of existing buildings and a new build Ysgol Ein Harglwyddes.
Option 11	New build for Y Faenol (270). Garnedd to move to a new site and capacity increased (420). Close Coed Mawr and Glanadda. Increase the capacity of Glancegin to receive additional foundation phase pupils. Improvements to part of Ysgol Hiracl. Consideration given to Secondary provision to include the condition of existing buildings and a new build for Ysgol Ein Harglwyddes.
Option 12	Extend Y Faenol to increase the capacity from 186 to 360. New school for Garnedd increasing capacity from 210 to 330. Close Ysgol Coed Mawr and Glanadda with pupils sent to Ysgol Y Faenol. Increase the capacity of Glancegin to receive additional foundation phase pupils. Improvements to part of Ysgol Hiracl. Consideration given to Secondary provision to include the condition of existing buildings and a new build for Ysgol Ein Harglwyddes.

Options appraisal of the long list of possible options

	Status Quo	Option 1	Option 2	Option 3	Option 4	Option 5	Option 6	Option 7	Option 8	Option 9	Option 10	Option 11	Option 12
Investment Objectives	Ensure enough places for each child in the right location	✓	✓	✓	?	?	✓	✓	✓	?	✓	✓	✓
	Ensure that no school is overcrowded	✓	✓	✓	?	✓	✓	✓	✓	✗	✓	✓	✓
	Ensure that no school is assessed in condition C or worse	✓	✓	✓	✓	✓	✓	✓	✓	✗	✓	✓	✓
	Significantly reduce surplus places in primary schools or increase efficiency	✓	✓	✓	✓	✓	✓	✓	✓	✓	✓	✓	✓
	Reduce the range of cost per pupil for the provision of education in the catchment area	✓	✓	✓	✓	✓	✓	✓	✓	?	✓	✓	✓
	Ensure class sizes in primary schools are appropriate	✓	?	✓	✓	✓	✓	✓	✓	✓	✓	✓	✓
	Reconcile the quality of education in the area	✓	?	✓	?	✓	✓	✓	✓	?	✓	✓	✓
	Ensure that no head teacher spends more than 20% of his / her time teaching	✓	✓	✓	✓	✓	✓	✓	✓	?	?	✓	✓
Practical Considerations	Is it possible to achieve the option within potential site constraints?	✗	✗	✓	?	✗	✓	✗	?	✗	?	✓	?
	No higher revenue costs	?	✓	✓	?	✓	✓	✓	?	?	?	✓	✓
	Band A Timetable Priority (£12.7m Limitations)	✗	✗	✓✓	✗	✗	✗	✗	✓✓	✗	✓✓	✗	✗

Following consideration of the results of the above evaluation, a short list of options was created, which included the options that met the majority of the investment objectives, and could be achieved within the limitations of the practical considerations. The three options (in addition to the status quo) that ranked highest were option 3, option 8, and option 10. These options were discussed during the 3rd CRP meeting, and a questionnaire was sent to members of the CRP requesting them to submit the relevant schools comments regarding the proposed options to identify a favoured option. In addition members were asked to list the options from 1-3.

Main themes raised from the CRP responses

In terms of the comments received, the response for choosing the first option favoured option 10 and 3. The main general issues identified by members of the CRP were; the need for any option to include improvements and increase the capacity of some Bangor school buildings, that consideration be given to any impact on transport and the traffic situation in Penrhosgarnedd, consideration of language issues, ensure appropriate arrangements for the children of Coedmawr and Glanadda, and consideration for any suitable development sites available in Bangor. The tables below set out the main themes for the individual options, although it is important to note that some of the comments are relevant to all the options.

Option 3	Extend Y Faenol increasing capacity from 186 to 315. New school for Garnedd increasing capacity from 210 to 420. Close Ysgol Coed Mawr and Glanadda. Increase the capacity of Glancegin to receive additional foundation phase pupils. Improvements to part of Ysgol Hirael. Consideration given to Secondary provision to include the condition of existing buildings and a new build for Ysgol Ein Harglwyddes.
Main themes	<ul style="list-style-type: none"> ▪ Transport and distances ▪ Planning permission and the possibility of increasing the capacity ▪ Concerns regarding the effect on the Welsh language ▪ Need to define what is meant by giving consideration to the secondary provision.

Option 8	Close Glanadda and Coed Mawr. Extend Ysgol Y Faenol (270). New build for Garnedd (380-420 children). New Building for Ysgol Ein Harglwyddes (120) during the second phase (through Church in Wales funding). Establish community sports facilities shared by Garnedd, Friars, Cae Top (as at Parc Eirias). Increase the capacity of Glancegin to receive additional foundation phase pupils. Improvements to part of Ysgol Hirael. Consideration given to Secondary provision to include the condition of existing buildings.
Main themes	<ul style="list-style-type: none"> ▪ Friars attracts more children than Tryfan ▪ Support for non-Welsh education – undermines Tryfan ▪ Sports resources – what about the rest of the schools? ▪ Condition of Tryfan school building ▪ Loss of communities ▪ Not necessary – Adequate public and private resources.

Option 10	Increase Y Faenol capacity (270). Garnedd to move to a new site and capacity increased (330). Modify the Glanadda site to accept Coed Mawr pupils (90). Increase the capacity of Glancegin to receive additional foundation phase pupils. Improvements to part of Ysgol Hirael. Consideration given to Secondary provision to include the condition of existing buildings and a new build for Ysgol Ein Harglwyddes.
Main themes	<ul style="list-style-type: none"> ▪ Reduce the traveling times for pupils ▪ Capacity of 330 too small for Garnedd. ▪ Focus on the secondary soon ▪ Transport ▪ Need confirmation of where the 'new site' will be located ▪ Post-use and sale of sites

Decision on the current direction

During the 4th CRP meeting, the option that reflected the current direction was identified, namely **Option 3**. This was based on the evaluation of how the options met the investment objectives, practical consideration such as financial resources, time and suitable sites, and the comments received from members of the CRP. Following further discussions, based on comments set out in the 4th CRP meeting, Option 3 contains a revised capacity of 315 rather than 270 for the Faenol. This proposed element will allow access arrangements for a class and a half yearly.